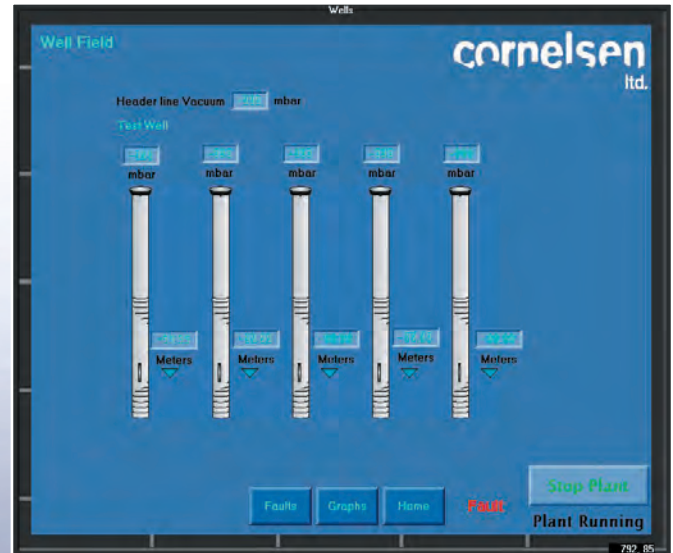
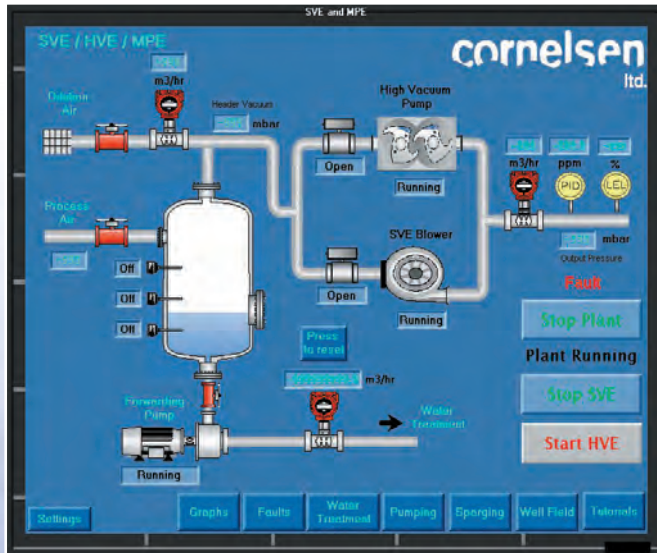


## Pilot Testing System Multi-Purpose ATEX Cat. 3 Datalogging/Web interface



## Multipurpose Datalogging ATEX Cat. 3 Pilot System

Continuous data logging with real time remote visualisation for Project and Technical Managers with charting and CSV file downloads



PLC Screenshots

### Multi-phase extraction (MPE)

Integrated steel inlet separator with progressive cavity discharge pump;

### Soil vapour extraction (SVE)

Inlet separator and LEL detection / conditioning system as above.

### Air Sparging System

High pressure low flow or low pressure, high flow

### Total Fluids Pumping

2" and 4" top filling pneumatic pumps

### LNAPL Skimming pump

### Vacuum Enhanced Total Fluids or NAPL Skimming

### On-board Oil/Water Separator

### On-board aqueous and vapour phase carbon treatment

### Datalogging

### Vapour Conditioning System

Continuous In-line air sample conditioning system to reduce RH, temperature, flow and pressure to optimise LEL and PID detection system accuracy, reliability and calibration.

### Continuous Datalogging with Web Upload

Dilution air and soil gas flow rates

Water Level monitoring with 5 no ATEX Cat.3 downwell pressure transducers (divers)

Applied and induced vacuum monitoring with 5 no. ATEX Cat. 3 wellhead pressure (vacuum) sensors

LEL and photo-ionisation detector

### User Convenience

12.1" Touchscreen PLC HMI

Pre-programmed test sequences (optional)

Test guidance notes

SD Card download

Bluetooth connected laptop for local remote operation

GPRS Web datalogging upload for realtime remote viewing

Please contact us for the full performance specification and hire rates of this system